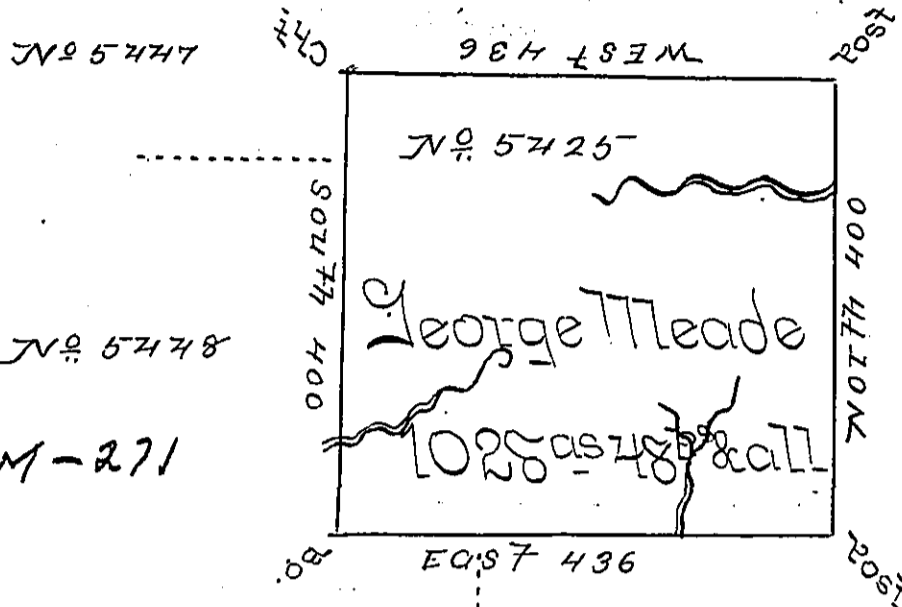


a46-39

M-279

WEST 436



NO 57478

M-271

NO 57479

a83-44

NO 57424

A-50-227

Situate on the Waters of Sinnemahoning Creek in North County containing 1025 Acres & all Parcels and the usual allowance for Roads surveyed May 18th 1797 for George Meade in pursuance of a Warrant No 5725 dated 30 March 1797

John Canan D.S.

Daniel Brodhead Jure. Secy.

IN TESTIMONY that the above is a copy of the original remaining on file in the Department of Internal Affairs of Pennsylvania, made conformably to an Act of Assembly approved the 16th day of February, 1833, I have hereunto set my Hand and caused the Seal of said Department to be affixed at Harrisburg, this first day of November 1898.

Jamech W. Latta
Secretary of Internal Affairs.